

JC75

Truck Scale Load Cell

Special Features

1. 柱式称重传感器，不锈钢材质，激光焊接密封；

Column load cell with stainless steel material and laser welding seal;

2. 双圆头摇柱式设计，动态响应快

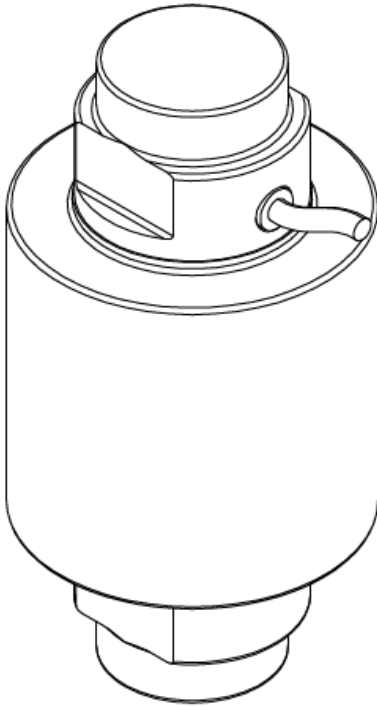
Double round rocker design, fast dynamic response;

3. 防护等级 IP68，适用于汽车衡、轨道衡等恶劣环境的称重；

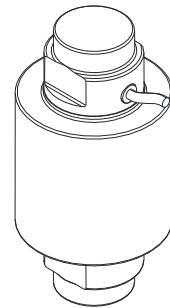
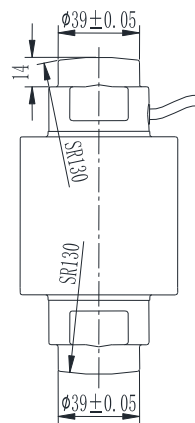
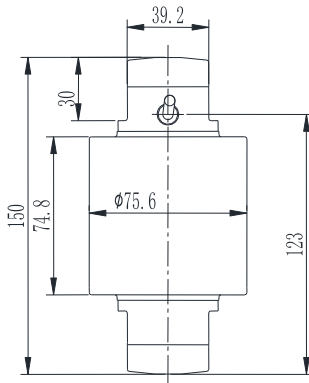
Protection class IP68, suitable for truck scale, railway scale and other harsh environment weighing application

4. 柱式结构抗过载、抗冲击能力强—额定载荷

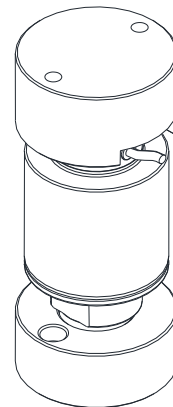
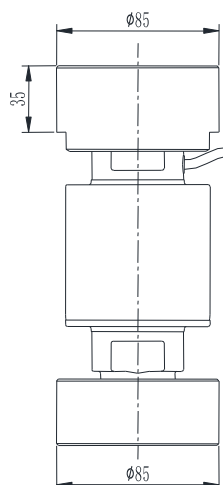
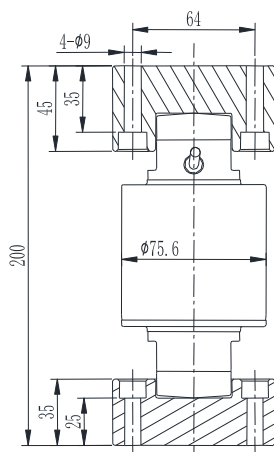
Column structure obtain strong ability for anti-overload and impact resistance.



主要尺寸 Schematic diagram FA409 force transducer



10~50t



10~50t 压头安装

技术参数 Specifications

品名	Specifications	技术指标/Technique
额定容量	Capacity	10,20,30,50t
输出灵敏度	Rated output	2±0.5% mV/V
零点输出	Zero balance	±2%F.S.
非线性	Non-linearity	0.017% F.S.
滞后	Hysteresis	0.017%F.S.
重复性	Repeatability	0.017%F.S.
蠕变 (30min)	Creep(300min)	0.017%F.S.
温度灵敏度漂移	Temp.effect on output	0.01%F.S./10℃
零点温度漂移	Temp.effect on zero	0.02%F.S./10℃
输入电阻	Input impedance	780±20Ω
输出电阻	Output impedance	700±10Ω
绝缘电阻	Insulation	≥5000MΩ/100VDC
激励电压	Recommended excitation	3~12V
最大激励电压	Maximum excitation	15V
温度补偿范围	Compensated temp range	-10~60℃
工作温度范围	Operation temp range	-30~70℃
安全超载	Safe overload	150%F.S.
极限超载	Ultimate overload	200%F.S.
电缆线尺寸	Cable size	φ5.4×10m
材料	Material	不锈钢
防护等级	IP class	IP68

接线方式和受力方向

Pin assignment & Loading direction

